

The background is a light blue gradient with several realistic water droplets of various sizes scattered across it. The droplets have highlights and shadows, giving them a three-dimensional appearance.

PFAS AND INDIGENOUS LANDS

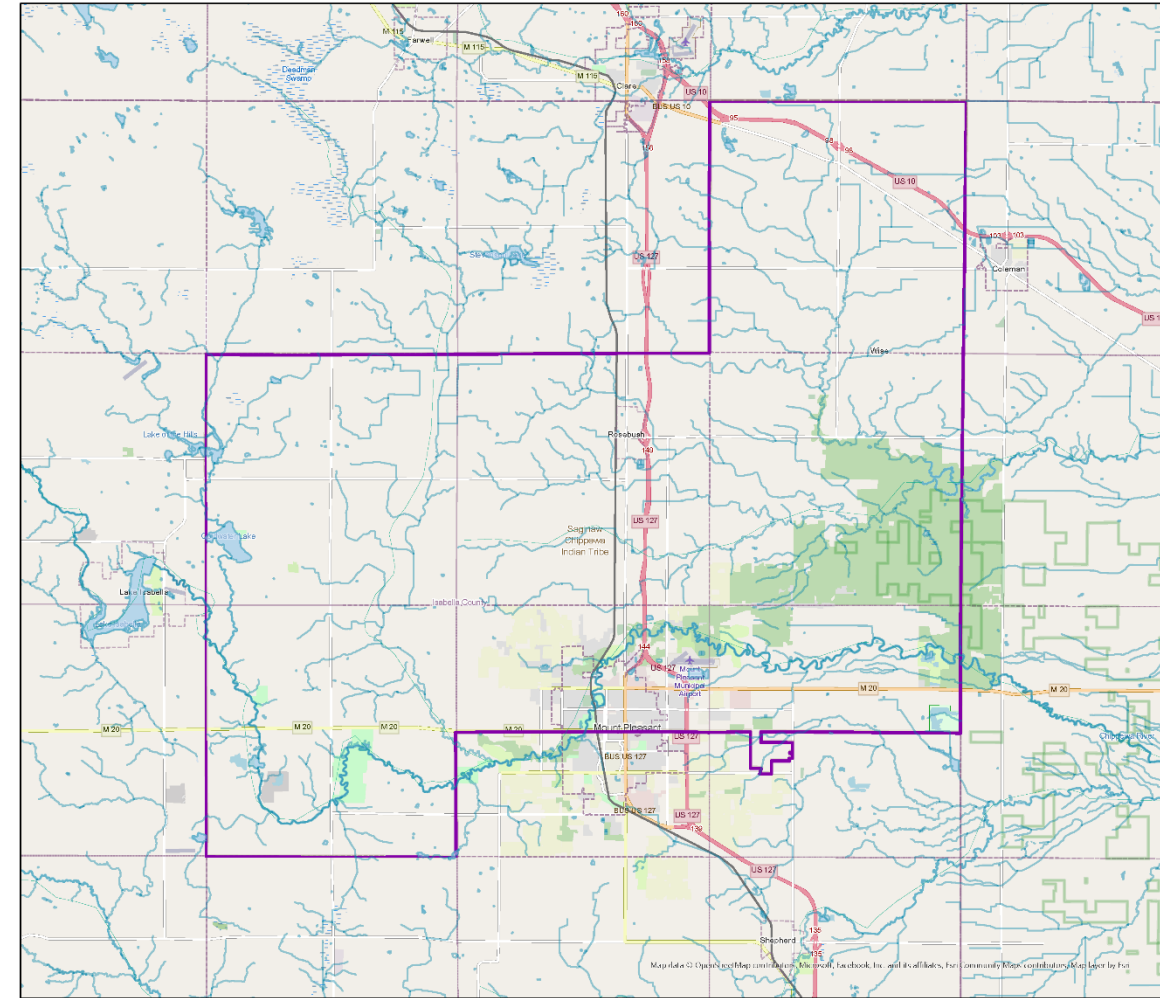
TROY TECHLIN

ENVIRONMENTAL MANAGER

SAGINAW CHIPPEWA INDIAN TRIBE OF MICHIGAN

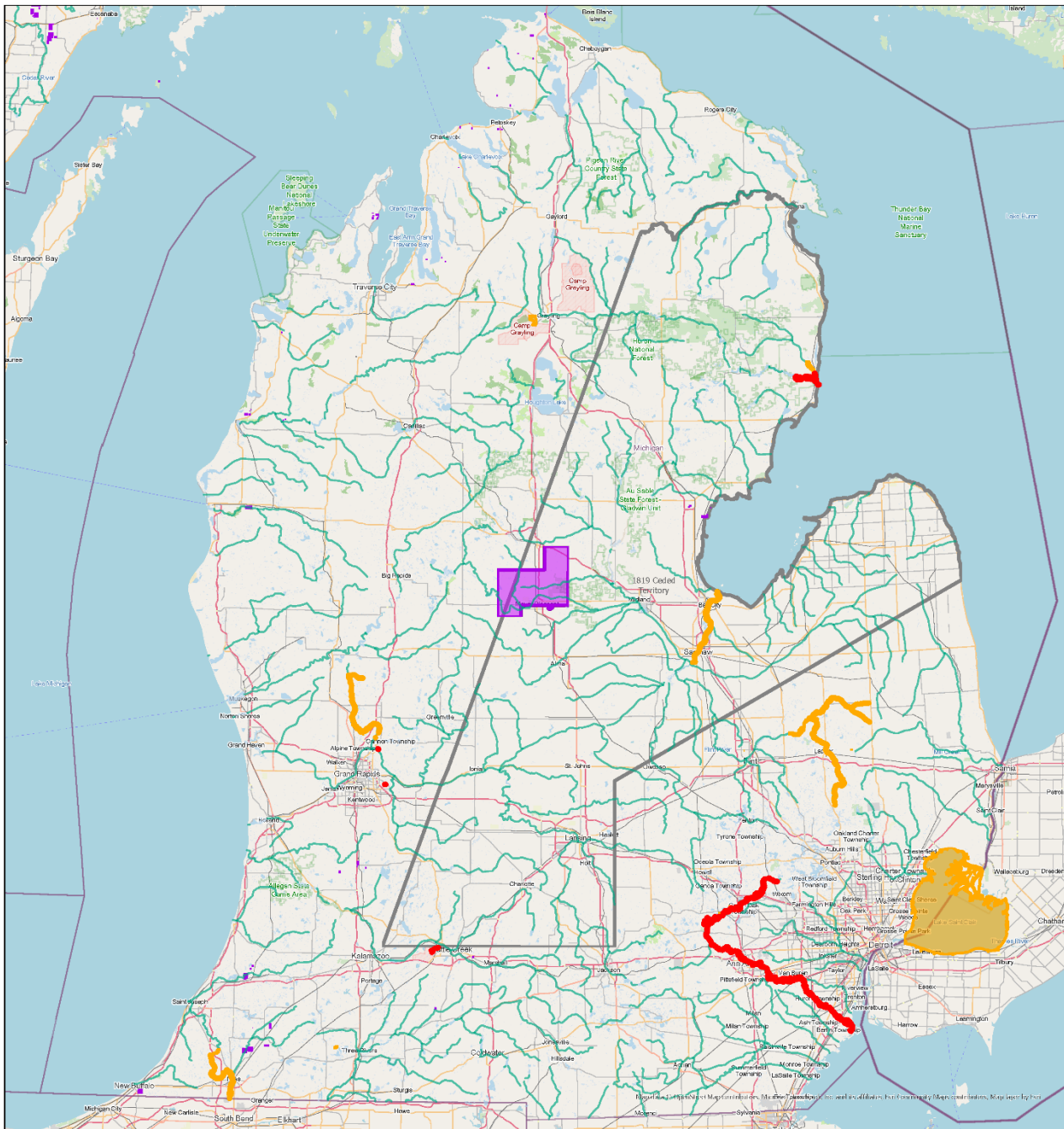
Saginaw Chippewa Indian Tribe of Michigan

Elevated levels of PFOS in consumable fish



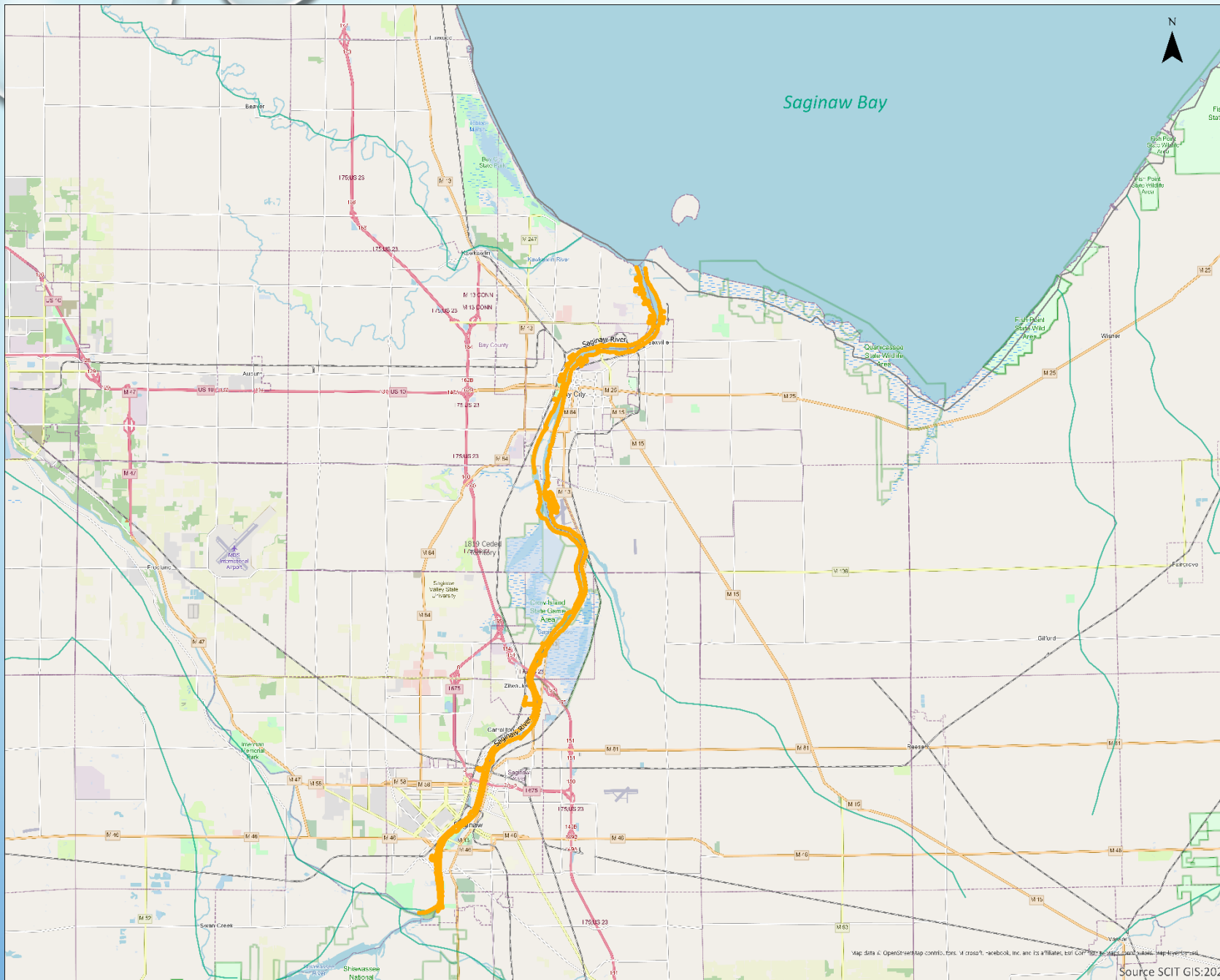
PFOS Positive Fish- Rivers	PFOS Positive Fish- Lakes	MITribalLands
FishType	FishType	Streams
Species Specific	Species Specific	Lakes and Ponds
All	All	1819 Ceded Territory
		Isabella Reservation

Working Together To
Protect Our Environment



State of Michigan

Consumption guidelines for fish with elevated PFOS levels

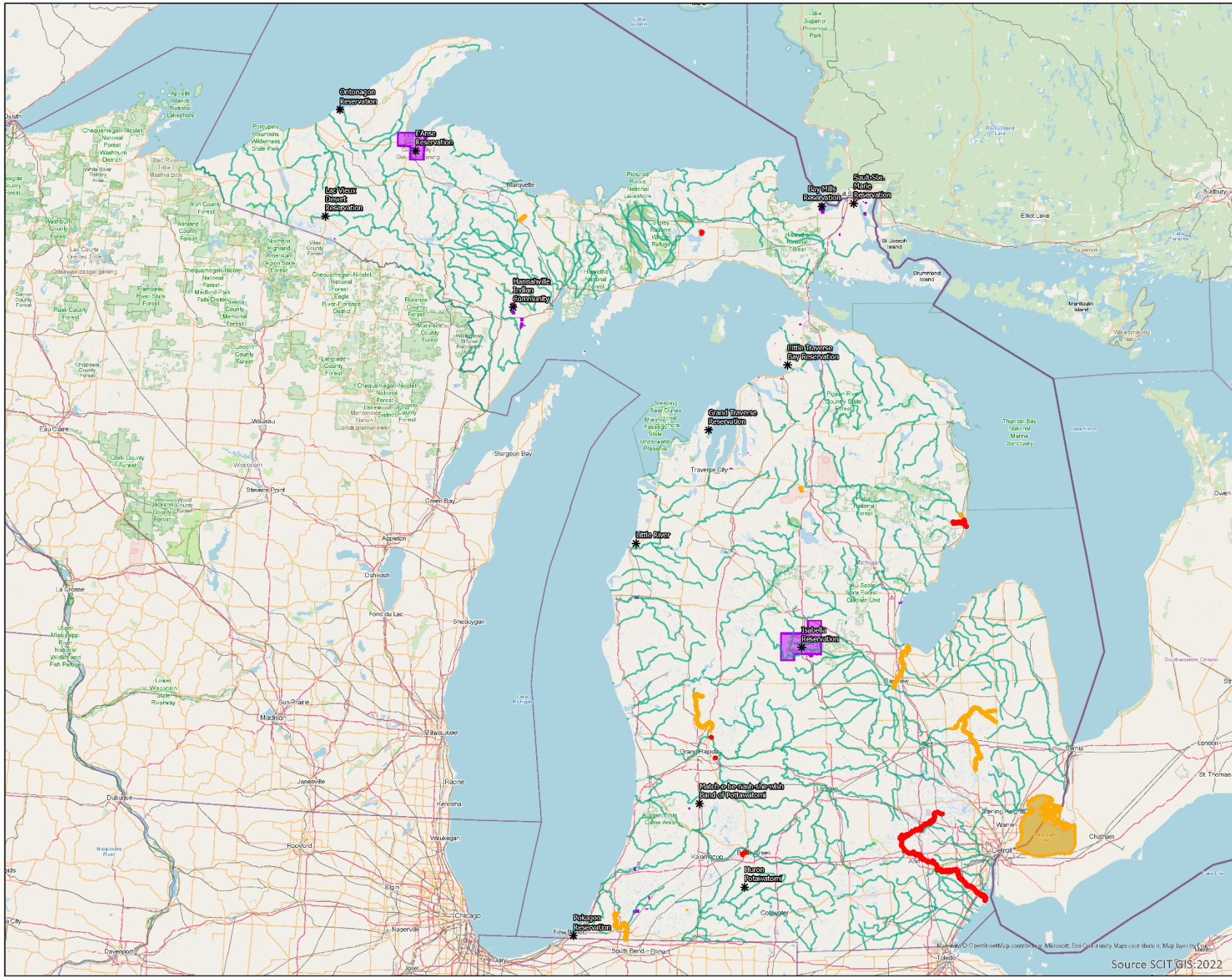


River/ Lake	Type of Fish	Chemical of Concern	Size of Fish (length in inches)	MI Servings per Month
Saginaw River	Bluegill	PFOS	Any	4
	Largemouth Bass	PFOS, PCBs, & Mercury	Under 18"	2
	Largemouth Bass	Mercury	Over 18"	1
	Smallmouth Bass	PFOS, PCBs, & Mercury	Under 18"	2
	Smallmouth Bass	Mercury	Over 18"	1
	Sunfish	PFOS	Any	4



Working Together To
Protect Our Environment

Source SCIT GIS:2022



State of Michigan Consumption guidelines for fish with elevated PFOS levels

River/Lake	Type of Fish	Chemical of Concern	Size of Fish (length in inches)	MI Servings per Month
Beignier River	Bluegill	PFOS	Any	4
	Large-mouth Bass	PFOS, PCBs & Mercury	Under 15"	2
	Large-mouth Bass	Mercury	Over 15"	1
	Smallmouth Bass	PFOS, PCBs & Mercury	Under 15"	2
	Smallmouth Bass	Mercury	Over 15"	1
St Joseph River	Sunfish	PFOS	Any	4
	Rock Bass	PFOS	Any	1
Helmer Creek	All Species	PFOS	Any	Do Not Eat
	All Species	PFOS	Any	Do Not Eat
Beaver Dam Pond	All Species	PFOS	Any	Do Not Eat
	Bluegill	PFOS	Any	2
	Sunfish	PFOS	Any	2
	Large-mouth Bass	PFOS	Any	6 per Year
	Rock Bass	PFOS	Any	1
Mott Reservoir	Smallmouth Bass	PFOS	Any	6 per Year
	Walleye	PFOS	Any	1
	Carp	PFOS	Any	2
	Large-mouth Bass	PFOS	Any	6 per Year
	Rock Bass	PFOS	Any	1
Holloway Reservoir	Smallmouth Bass	PFOS	Any	6 per Year
	Walleye	PFOS	Any	1
	Carp	PFOS	Any	2
	Large-mouth Bass	PFOS	Any	6 per Year
	Rock Bass	PFOS	Any	1
Hitt River	Large-mouth Bass	PFOS	Any	6 per Year
	Rock Bass	PFOS	Any	1
	Smallmouth Bass	PFOS	Any	6 per Year
Allen Lake	All Other Species	PFOS	Any	Do Not Eat
	Bluegill	PFOS	Any	Do Not Eat
Au Sabie River S of Foose	Large-mouth Bass	PFOS	Any	Do Not Eat
	Rock Bass	PFOS	Any	Do Not Eat
	Smallmouth Bass	PFOS	Any	Do Not Eat
	Suckers	PFOS	Any	Do Not Eat
	Sunfish	PFOS	Any	Do Not Eat
Au Sabie River S of Foose	All Other Species (MDHHS has guidelines for certain species - See the Eat Safe Fish Guide.)	PFOS	Any	Do Not Eat
	All Other Species (MDHHS has guidelines for certain species - See the Eat Safe Fish Guide.)	PFOS	Any	Do Not Eat
Van Etten Creek	All Other Species (MDHHS has guidelines for certain species - See the Eat Safe Fish Guide.)	PFOS	Any	Do Not Eat
	All Other Species	PFOS	Any	Do Not Eat
Clark's Marsh	Bluegill	PFOS	Any	Do Not Eat
	Sunfish	PFOS	Any	Do Not Eat
Clark's Marsh	All Other Species	PFOS	Any	Do Not Eat

River/Lake	Type of Fish	Chemical of Concern	Size of Fish (length in inches)	MI Servings per Month
Van Etten Lake	Stock Crapie	Mercury & PFOS	Any	4
	Large-mouth Bass	Mercury & PFOS	Under 17"	2
	Large-mouth Bass	Mercury & PFOS	Over 17"	1
	Smallmouth Bass	Mercury & PFOS	Under 17"	2
	Smallmouth Bass	Mercury & PFOS	Over 17"	1
St Joseph River	Suckers	Mercury & PFOS	Under 14"	0
	Suckers	Mercury	14" to 20"	4
	Suckers	Mercury	Over 20"	2
	White Crappie	Mercury & PFOS	Any	4
	Bluegill	Mercury & PFOS	Any	2
Ponds at 4300 Cannonsburg Rd	All Species	PFOS	Any	Do Not Eat
	Large-mouth Bass	Mercury & PFOS	Under 15"	2
Rogue River	Large-mouth Bass	Mercury	Under 15"	1
	Smallmouth Bass	Mercury & PFOS	Under 15"	2
	Smallmouth Bass	Mercury & PFOS	Over 15"	1
Wilden Lake	All Species	PFOS	Any	6 per Year
	Bluegill	PFOS	Any	4
	Large-mouth Bass	Mercury	Under 15"	1
	Large-mouth Bass	Mercury	Over 15"	6 per year
	Smallmouth Bass	Mercury	Under 15"	1
Lake Pleasant	Large-mouth Bass	Mercury	Over 15"	6 per year
	Sunfish	PFOS	Any	4
Silver Lead Creek	Brook Trout	PCBs & PFOS	Any	2
	All Species	PFOS	Any	Do Not Eat
Norton Creek	All Species	PFOS	Any	Do Not Eat
	All Species	PFOS	Any	Do Not Eat
Hubble Pond	All Species	PFOS	Any	Do Not Eat
	All Species	PFOS	Any	Do Not Eat
Kent Lake	All Species	PFOS	Any	Do Not Eat
	All Species	PFOS	Any	Do Not Eat
Dre Lake	All Species	PFOS	Any	Do Not Eat
	All Species	PFOS	Any	Do Not Eat
Strawberry Lake	All Species	PFOS	Any	Do Not Eat
	All Species	PFOS	Any	Do Not Eat
Zukley Lake	All Species	PFOS	Any	Do Not Eat
	All Species	PFOS	Any	Do Not Eat
Galagher Loon Lake	All Species	PFOS	Any	Do Not Eat
	All Species	PFOS	Any	Do Not Eat
Whitewood Lake	All Species	PFOS	Any	Do Not Eat
	All Species	PFOS	Any	Do Not Eat
Base Line Lake	All Species	PFOS	Any	Do Not Eat
	All Species	PFOS	Any	Do Not Eat
Barton Pond	All Species	PFOS	Any	Do Not Eat
	All Species	PFOS	Any	Do Not Eat
Geddes Pond	All Species	PFOS	Any	Do Not Eat
	All Species	PFOS	Any	Do Not Eat
Argo Pond	All Species	PFOS	Any	Do Not Eat
	All Species	PFOS	Any	Do Not Eat
Ford Lake	All Species	PFOS	Any	Do Not Eat
	All Species	PFOS	Any	Do Not Eat
Belleville Lake	All Species	PFOS	Any	Do Not Eat
	Bluegill	PFOS	Any	4
Lake St. Clair	Sunfish	PFOS	Any	4
	Bluegill	Mercury & PFOS	Any	12
Long Lake	Large-mouth Bass	Mercury & PFOS	Under 15"	2
	Large-mouth Bass	Mercury	Over 15"	1
	Smallmouth Bass	Mercury	Under 15"	2
	Smallmouth Bass	Mercury & PFOS	Over 15"	1
	Sunfish	Mercury & PFOS	Any	12

PFOS Positive Fish- Rivers
 FishType
 Species Specific
 All

PFOS Positive Fish- Lake
 FishType
 Species Specific
 All

* MI Tribal Locations
 * MI Tribal Lands
 Streams
 Lakes and Ponds





TROY TECHLIN

ENVIRONMENTAL MANAGER

TTECHLIN@SAGCHIP.ORG